

SUSTAINABLE

TECHNOLOGY

About Us

Menard Bachy is a leading specialist geotechnical contractor operating throughout Australasia, and the South Pacific region with a reputation for quality, innovation and engineered solutions. As a subsidiary of the international Soletanche Freyssinet Group, a specialist contracting company and a world leader in geotechnical, environmental and civil engineering construction, Menard Bachy offers local expertise supported by a global network of unparalleled resource and experience.



Funicane Island, WA, Sheet Piles & Anchors



Cotter Saddle Dam, ACT, GIN Grouting

Our Services

Value engineering can be made available to clients at the early stages of project development, enabling technical excellence into the design process with innovative geotechnical construction techniques and methods. With our specialist expertise in these disciplines, Menard Bachy can assist with the creation of turn-key solutions for challenging projects. With its proven track record, Menard Bachy consistently provides reliable schedules and predictable construction outcomes; these aspects are combined with an overall commitment to excellence in safety, quality and environmental preservation.

Area of Expertise

Menard Bachy operates across the spectrum of geotechnical construction techniques, which can incorporate the use of ground improvement and deep foundations for the construction of buildings and civil engineering structures, including repairing foundations through underpinning or rehabilitation, slope stabilisation and excavation retention, carrying out environmental remediation and confinement using in ground water cut offs.

Recent Projects

- 2011** Townsville Marine Project (QLD), **Laing O'Rourke**
- Kempsey Bypass Alliance (NSW), **KBA Alliance**
- Breakwater Road – Geelong (VIC), **McConnell Dowell**
- Melbourne Main Sewer Replacement (VIC), **MMSR Alliance**
- Rix Creek Mine (NSW), **Fernandes Construction**
- Mount Isa Mines (QLD), **Xstrata**
- Barangaroo Phase 1 (NSW), **Bovis Lend Lease**
- 2010** Wyaralong Dam (QLD), **Wyaralong Dam Alliance**
- Garden Island Wharf (NSW), **Thomas & Coffey**
- Bellevue Waste Control (WA), **Landcorp**
- Cotter Saddle Dam (ACT), **Bulk Water Alliance**
- Fisherman Islands, Paddock S3B (QLD), **Port of Brisbane Corporation**
- Port Botany Expansion (NSW), **Boulderstone – Jan de Nul JV**
- Hunter River South Arm (NSW), **Daracon**
- Gladstone LNG Fisherman's Landing (QLD), **Laing O'Rourke**
- Kingsgrove to Reversby railway (NSW), **K2RQ Alliance**
- Desalination Plant Perth (WA), **Perth Water Corporation**
- 2009** Tharwa Bridge (ACT), **ACT Procurement Solutions**
- Port Bonython (SA), **Santos**
- Conrad Jupiters Casino (QLD), **Tabcorp**
- Airlink (QLD), **Thiess John Holland JV**
- Funicane Island (WA), **BHP**

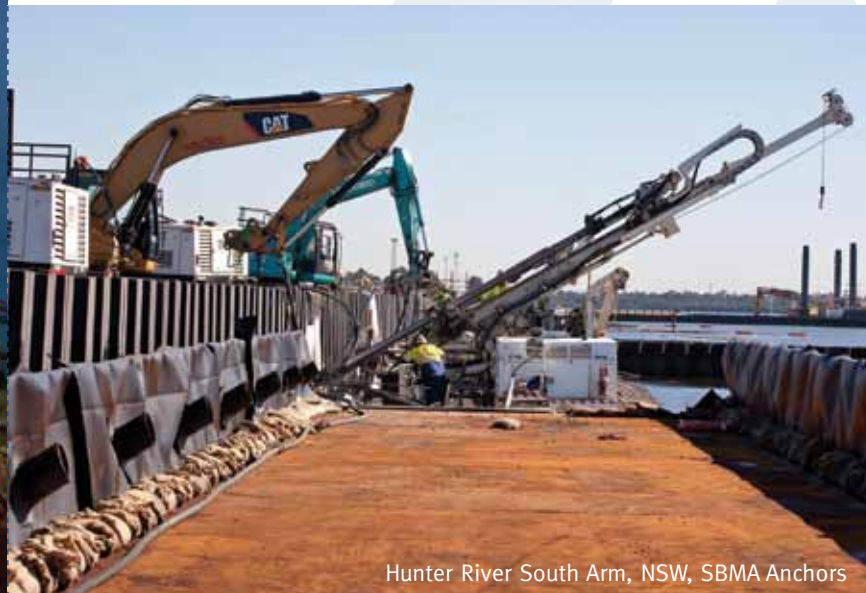
- Dynamic Replacement
- Controlled Modulus Columns
- Controlled Modulus Columns
- Diaphragm Wall & Jet Grouting
- Ground Anchors (SBMA)
- Grouting
- Diaphragm Wall - design
- Rock Anchors & Drainage Holes
- Jet Grouting
- Permeable Reactive Barrier
- GIN Grouting
- Vacuum Consolidation
- Dynamic & Vibro Compaction
- Ground Anchors (SBMA)
- Wick Drains
- Controlled Modulus Columns
- Diaphragm Wall
- Jet Grouting & Rock Anchors
- Slurry Walls
- Underpinning Jet Grouting
- Diaphragm Wall & Jet Grouting
- Anchors & Sheetpiling



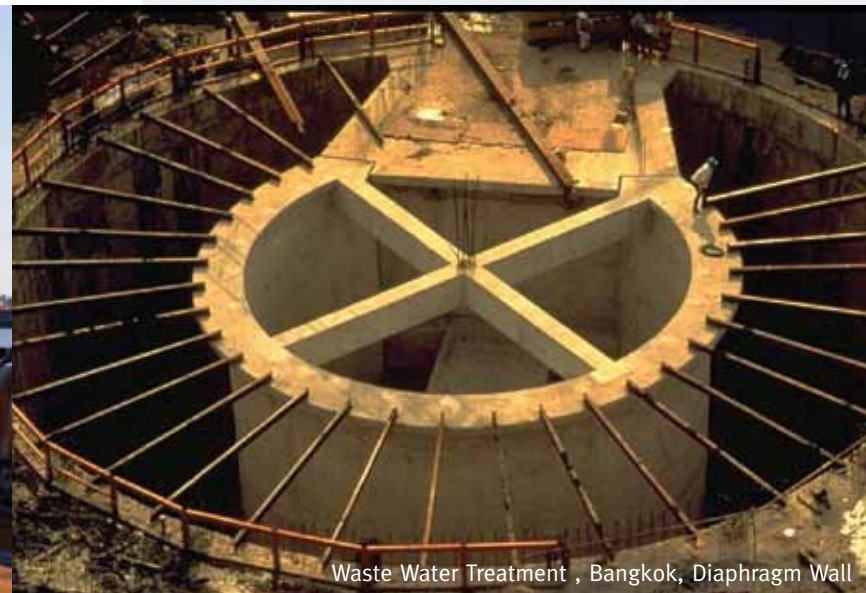
Perth Desalination Plant, WA, Diaphragm Wall



Mayfield, NSW, Soil Bentonite Wall



Hunter River South Arm, NSW, SBMA Anchors



Waste Water Treatment , Bangkok, Diaphragm Wall



menard BACHY



menard BACHY

Ground Retention

- Diaphragm Walls
- Soft/Hard Walls
- Jet Grouting
- Soil & Rock Anchors
- Soil Nails

Soil Improvement

- Dynamic Compaction & Dynamic Replacement
- Void filling & grouting
- Vacuum Consolidation
- Compaction Grouting
- Vertical 'Wick' Drains
- Vibro Densification

Cut-Off Systems

- Slurry Walls
- Bentonite Cement Walls
- Grouting
- Freyssimix

Soil Reinforcement (Inclusions)

- CMC (Controlled Modulus Columns)
- Jet Grouting
- Micropiles
- Stone Columns
- Soil Mixing, CSM

Menard Bachy Pty Ltd, Australia

Sydney, Head Office:

13-15 Lyonpark Road
Macquarie Park NSW 2113
Tel : +61 2 9491 7100
Fax: +61 2 9491 7111

E-mail: info@menardbachy.com.au

QLD Office:

6 Chapman Place
Eagle Farm QLD 4009
Tel: +61 7 3354 9100
Fax: +61 7 3354 9111

Email: qld@menardbachy.com.au

VIC Office:

41 Boundary Road
North Melbourne VIC 3051
Tel: +61 3 9321 1333
Fax: +61 3 9326 8996

Email : vic@menardbachy.com.au

WA Office: GFWA Pty Ltd

113 Radium Street
Welshpool WA 6106
Tel: +61 8 9350 5394
Fax: +61 8 9358 3095

Email: gfw@gfw.com.au

www.menardbachy.com.au

Providing a comprehensive range of geotechnical construction techniques throughout Australia, New Zealand and the South Pacific region.